

# Seismic Refraction

Matt Beachly

# Archeological Targets

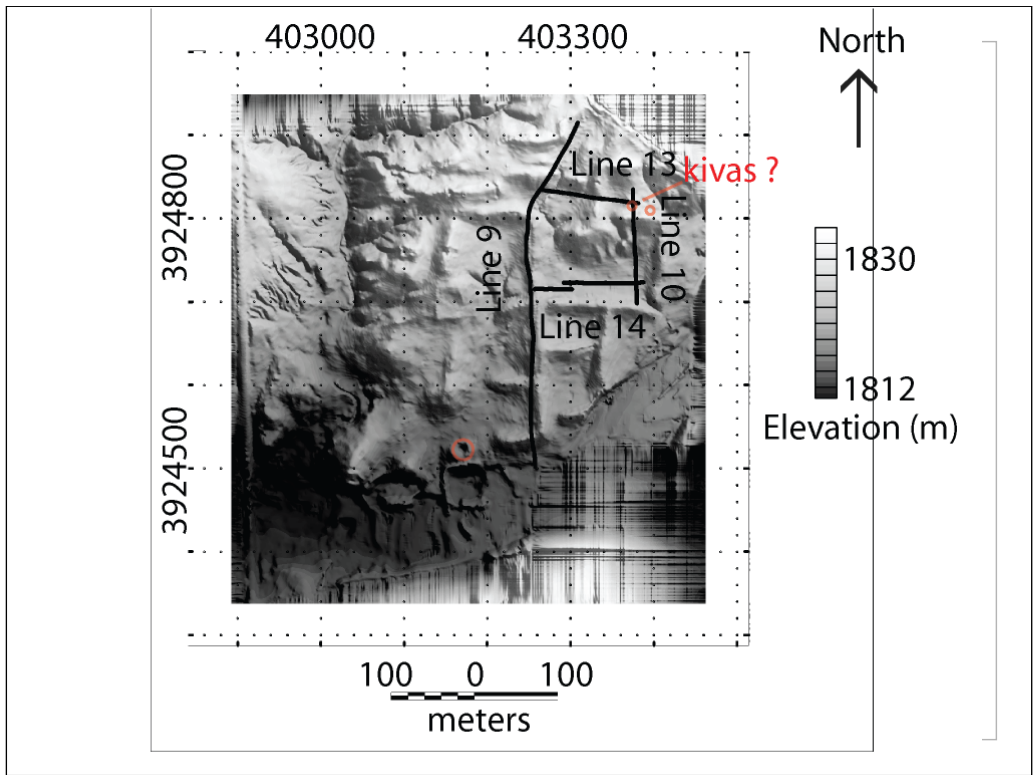
- Excavations
  - Kivas
  - Room-blocks
  - Trenches (Nels Nelson)



# Survey Design

- Line 10 extension 50 m
- Line 13 120 m
- Line 14 100 m





# Survey Parameters

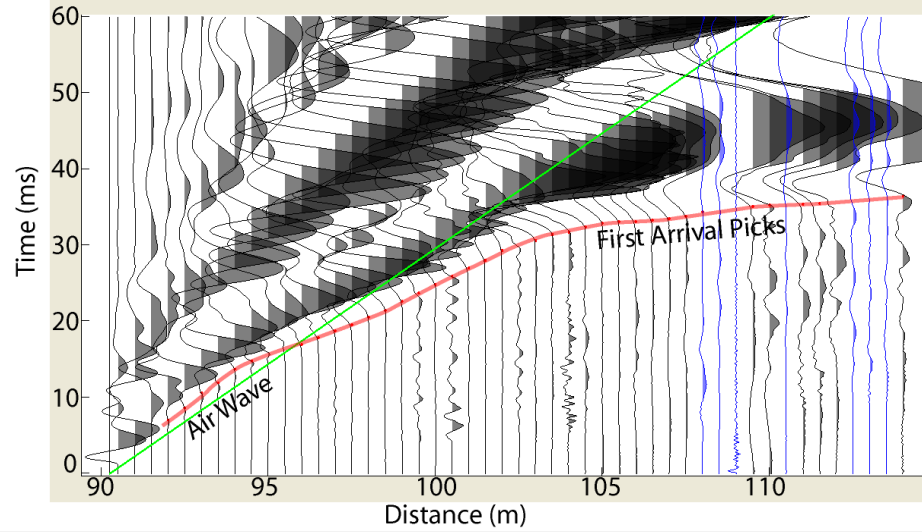
- 30 Hz vertical component geophones
- Hammer Source
- 48 geophones in the spread
- 0.5m geophone spacing
- 3m hammer station spacing
- 6 shot stacking
- Bison Seismic System



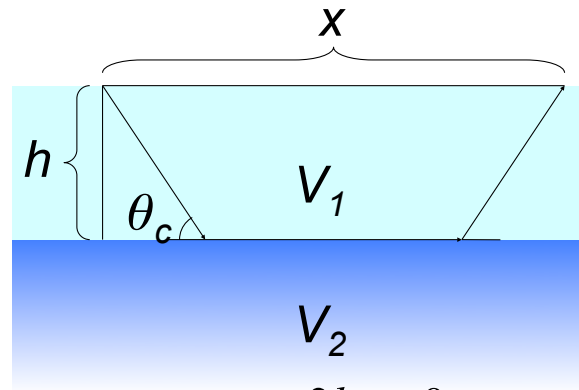
# Data Processing

- Pick First Arrivals
- Design Forward Models
- Build Fence Diagram
  
- Software: MATLAB – geomod

# Picking First Arrivals



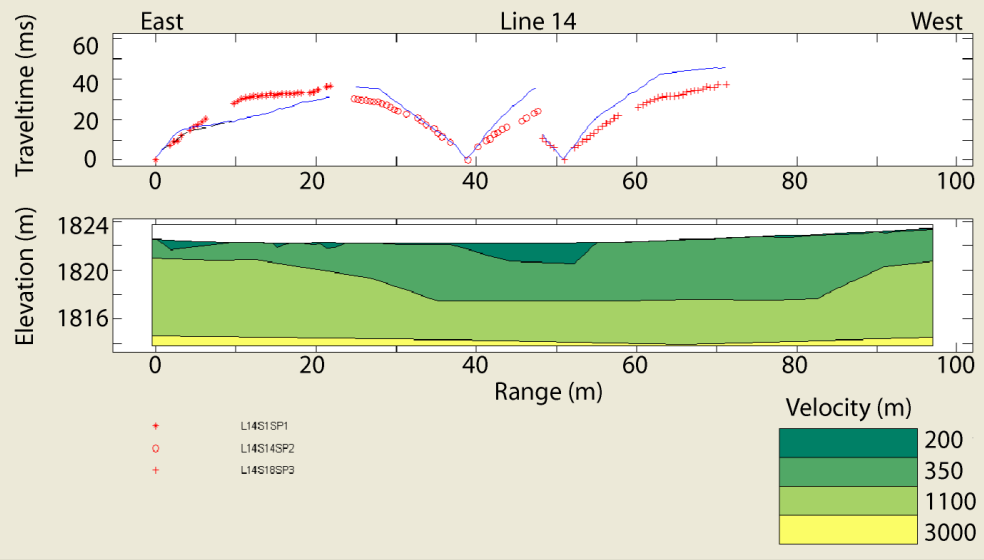
# Refraction Geometry



$$t = \frac{x}{V_2} + \frac{2h \cos\theta_c}{V_1}$$



# Forward Modeling

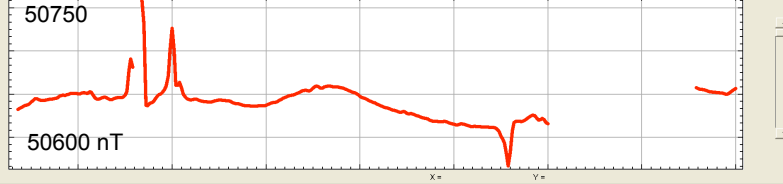
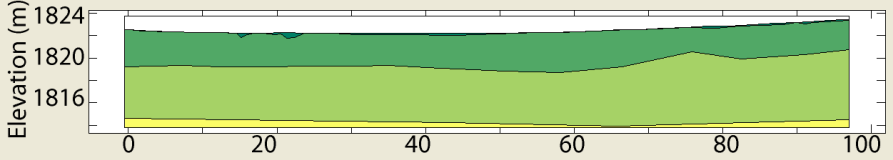
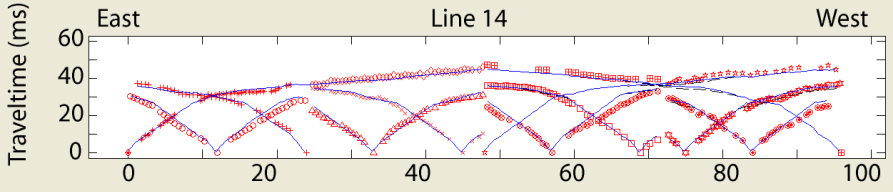


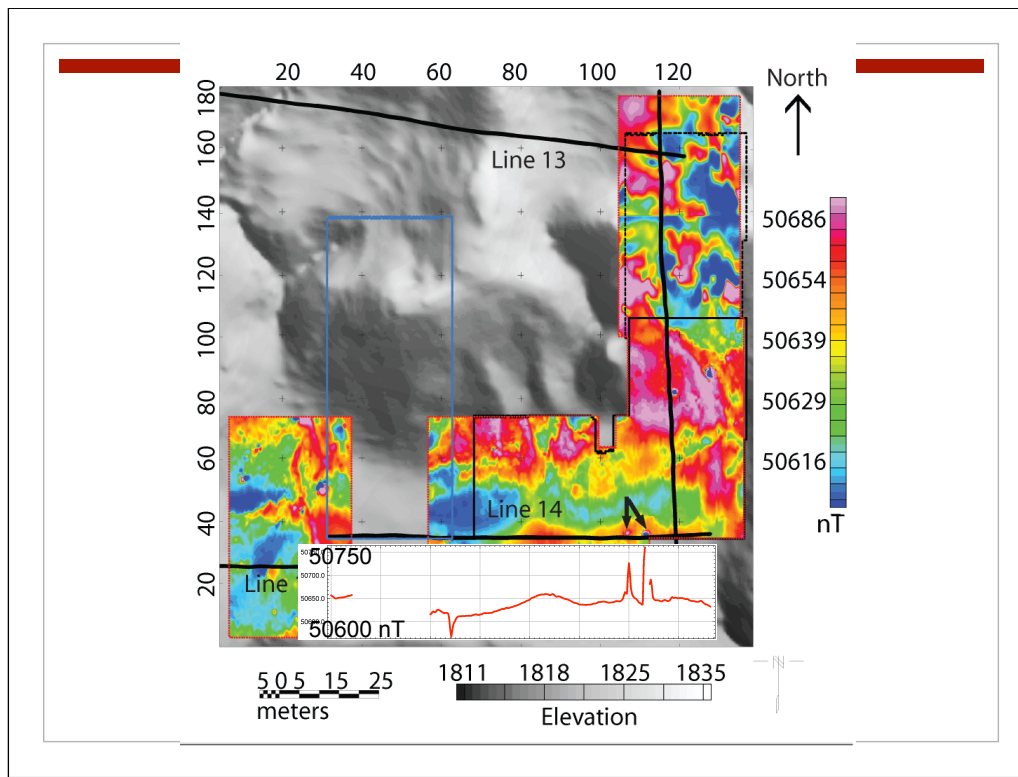
# Velocities

- Soil: 200 m/s
- Fill: 300 m/s
- Terrace:  
350 m/s
- Ancha Formation:  
700–1100 m/s
- Galisteo Formation:  
m/s



# Line 14





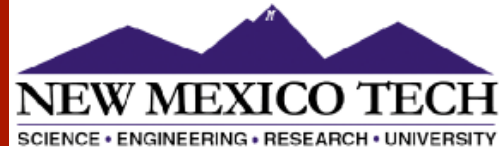
# Summary

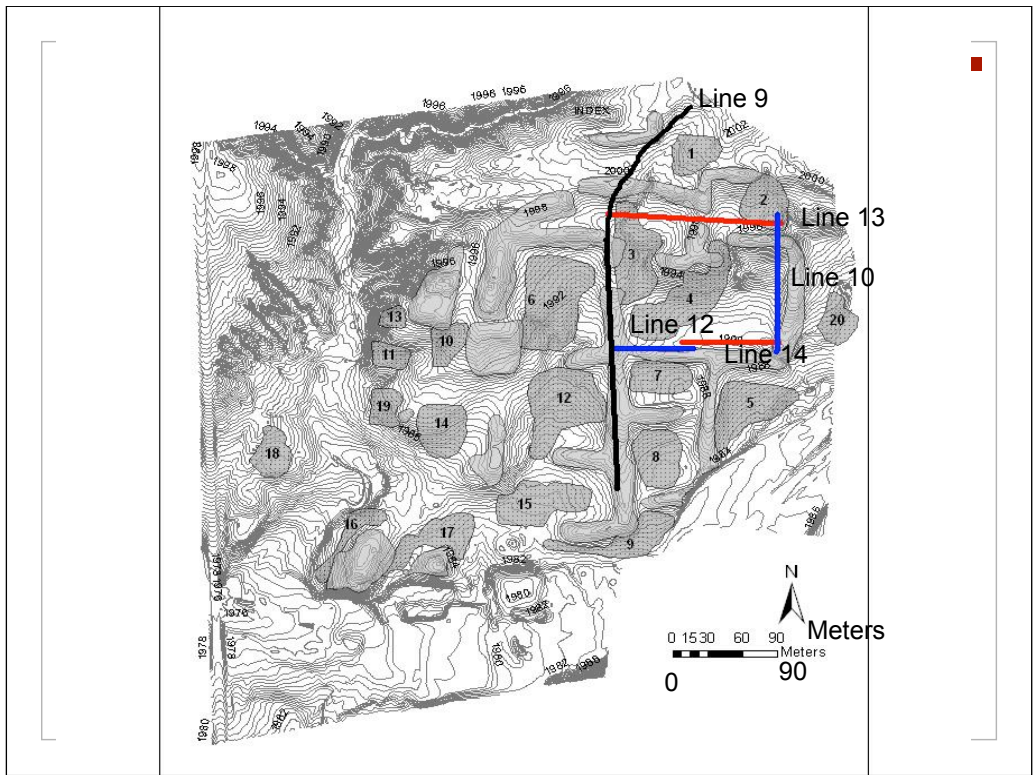
- Processing
  - Geomod (Matlab)
  - First picks
  - Forward Model
- 2 fire pits on Line 14

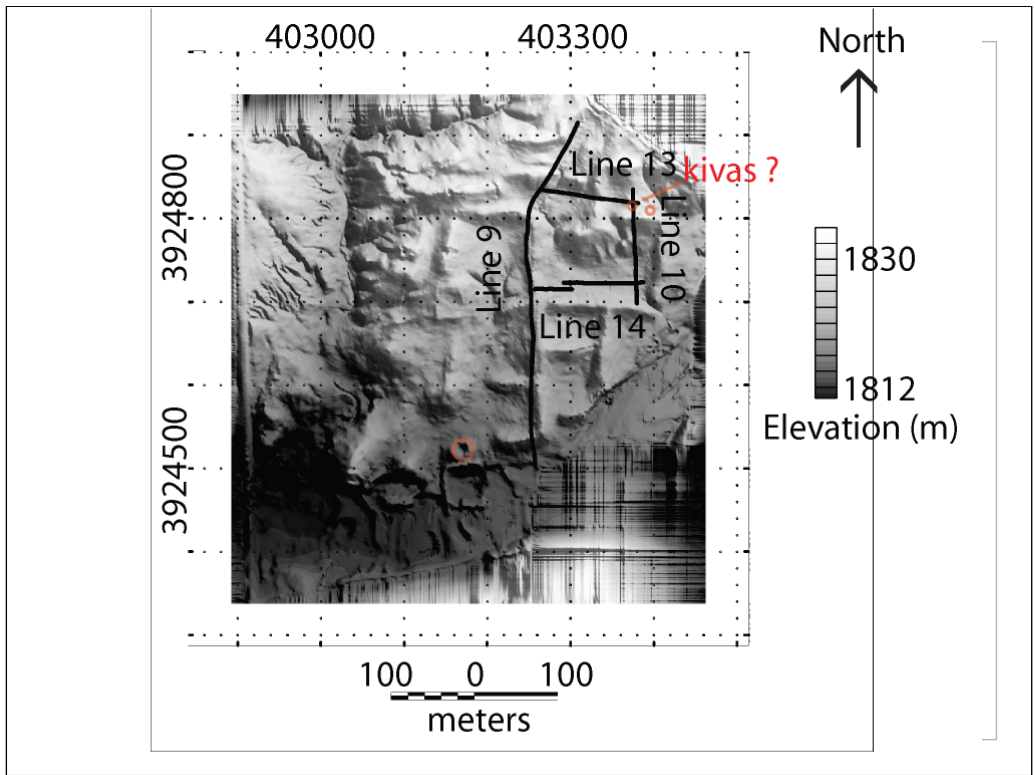


# Archeological Interpretations for Seismic Data

Shaun Finn



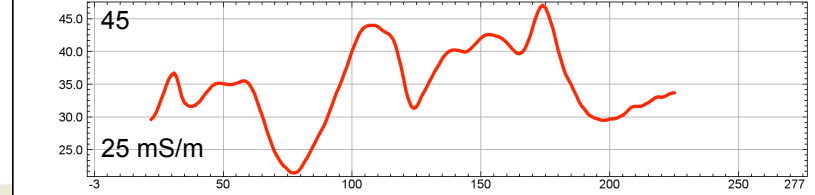
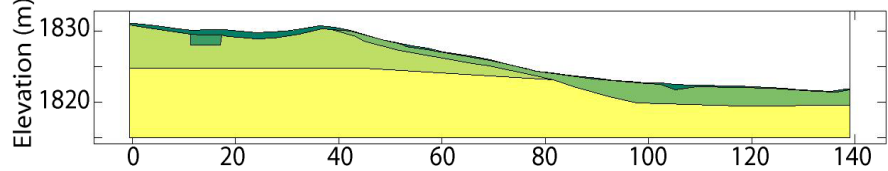
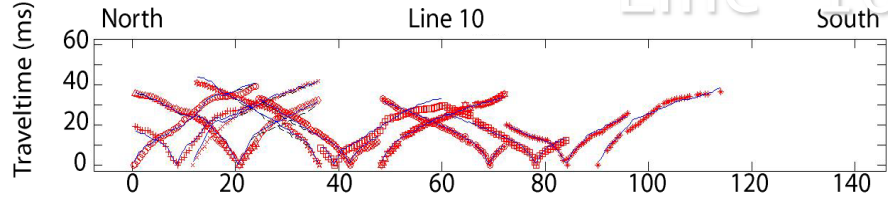


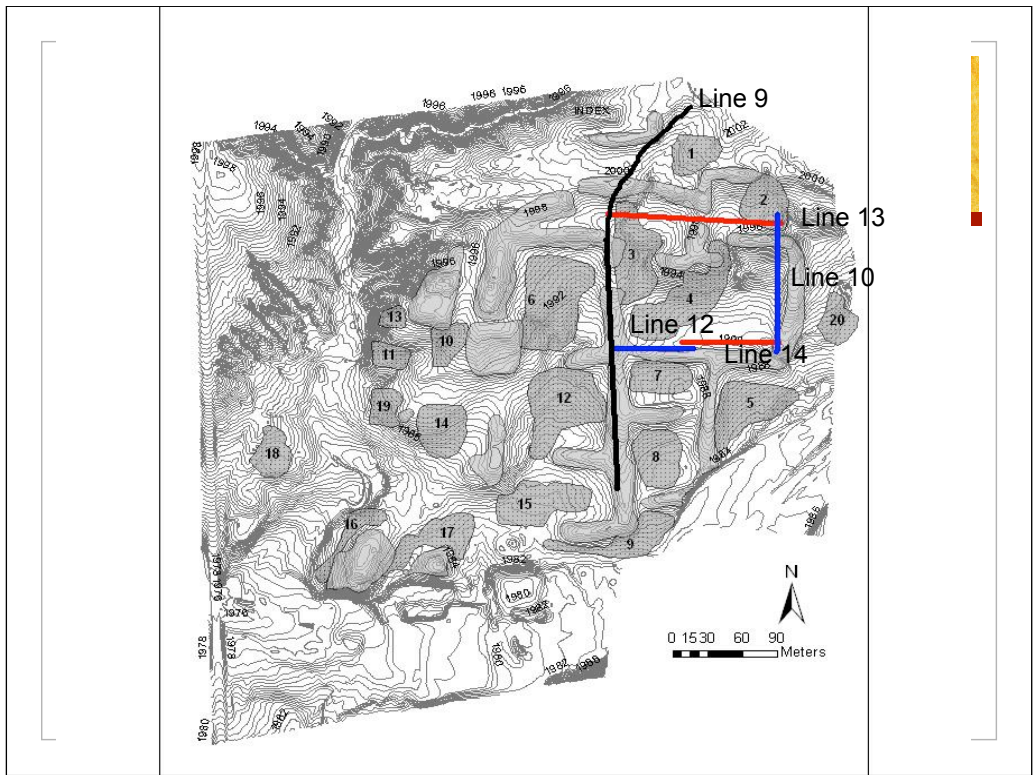




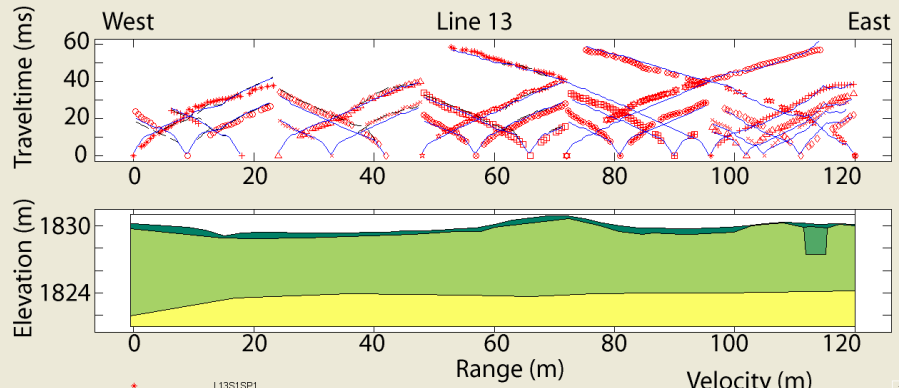


# Line 10





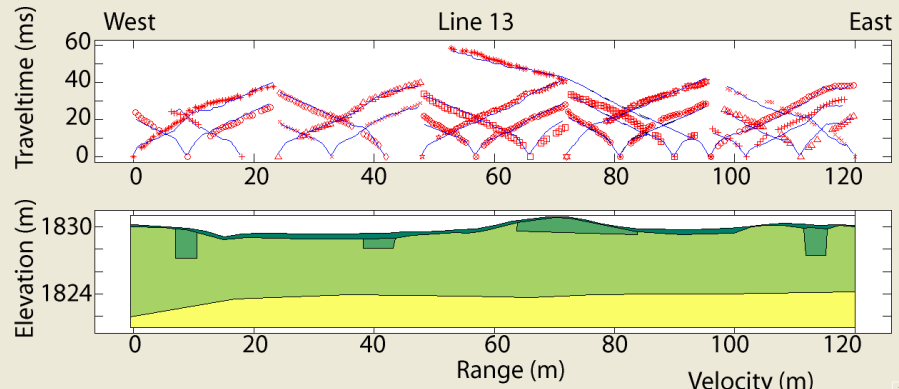
# Line 13 Before



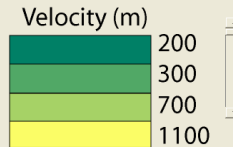
8#<> 1#<> 2#<> 3#<> 4#<> 5#<> 6#<> 7#<> 8#<> 9#<> 10#<> 11#<> 12#<> 13#<> 14#<> 15#<> 16#<> 17#<> 18#<> 19#<> 20#<> 21#<> 22#<> 23#<> 24#<> 25#<> 26#<> 27#<> 28#<> 29#<> 30#<> 31#<> 32#<> 33#<> 34#<> 35#<> 36#<> 37#<> 38#<> 39#<> 40#<> 41#<> 42#<> 43#<> 44#<> 45#<> 46#<> 47#<> 48#<> 49#<> 50#<> 51#<> 52#<> 53#<> 54#<> 55#<> 56#<> 57#<> 58#<> 59#<> 60#<> 61#<> 62#<> 63#<> 64#<> 65#<> 66#<> 67#<> 68#<> 69#<> 70#<> 71#<> 72#<> 73#<> 74#<> 75#<> 76#<> 77#<> 78#<> 79#<> 80#<> 81#<> 82#<> 83#<> 84#<> 85#<> 86#<> 87#<> 88#<> 89#<> 90#<> 91#<> 92#<> 93#<> 94#<> 95#<> 96#<> 97#<> 98#<> 99#<> 100#<> 101#<> 102#<> 103#<> 104#<> 105#<> 106#<> 107#<> 108#<> 109#<> 110#<> 111#<> 112#<> 113#<> 114#<> 115#<> 116#<> 117#<> 118#<> 119#<> 120#<>

x= y=

# Line 13 After

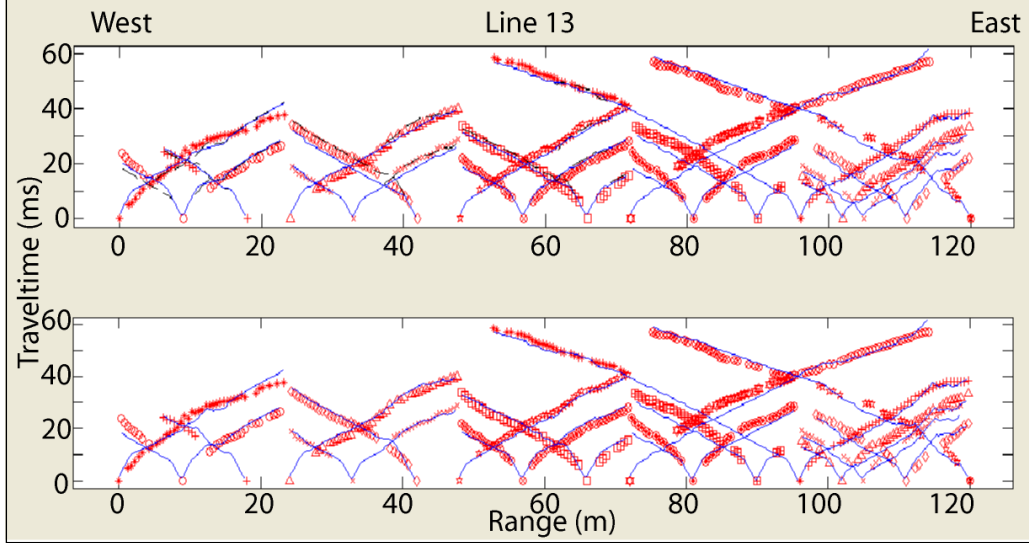


- + L13S1SP1
- o L13S4SP1
- + L13S7SP1
- △ L13S9SP2
- x L13S12SP2
- ◇ L13S15SP2

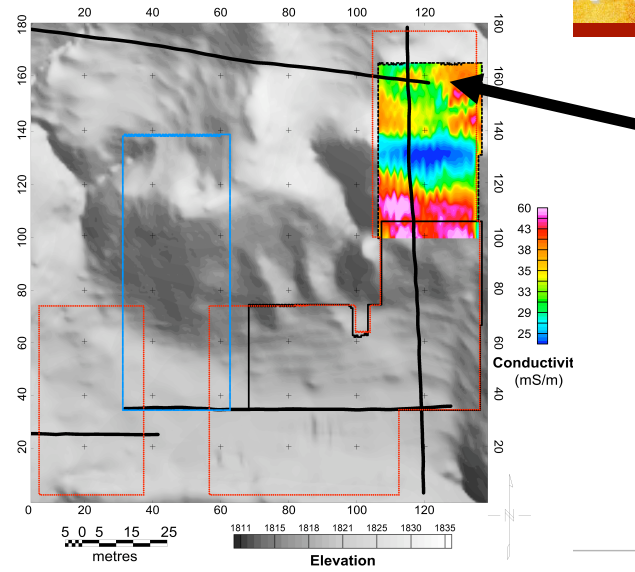


x= y=

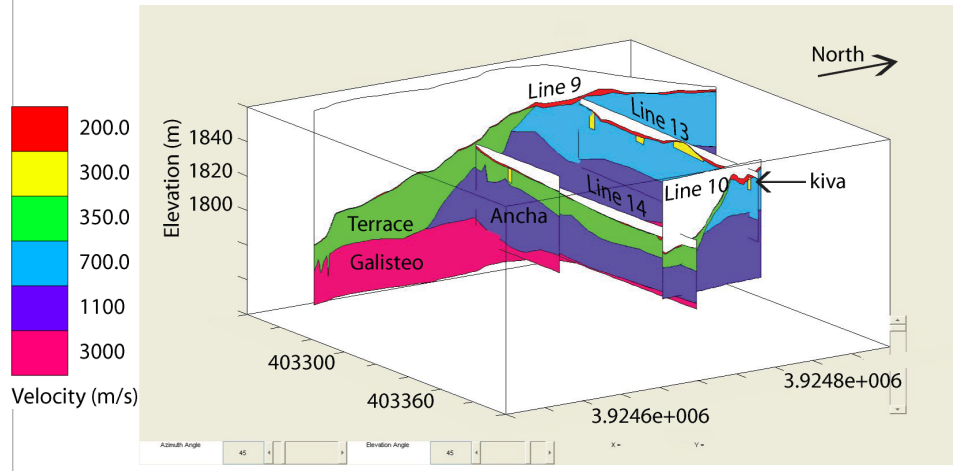
# Line 13 Comparison



# Comparison to 2006 EM Data



# Fence Diagram



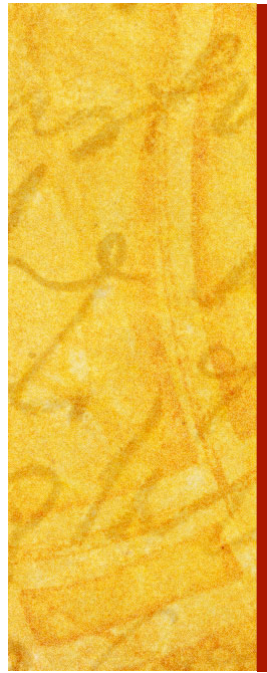
# Conclusions

- Line 13 + Line 10 Intersection
  - Verified Kiva using multiple methods
  - Fence Diagram
- Some uncertainty





Questions?

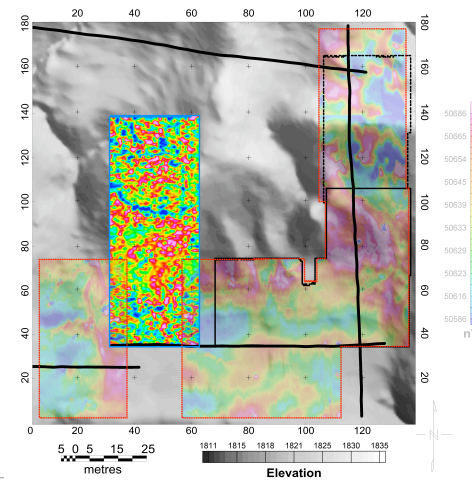


# Conclusion

San Marcos Archaeological Site

# Summary

- Successful integration of four geophysical data sets:
  - Kivas!
  - Fire pits
  - Visible wall structures
- Building on the story of San Marcos...



# Future work

- EM
  - Comparative measurements at a nearby non-archaeological site
  - Filter mag. suscept. data
- Seismic
  - Analyse mag data for Line 13
- EM/Mag/GPR
  - Extend overlap of data sets



# Acknowledgements

- Thanks to John, Darcy, Nicole, Louise for all the help and your patience!
- Bill Baxter, for guidance and good stories...
- Santo Domingo and Cochiti Pueblos – thank you.
- The wonderful SAGE faculty
- The whole crazy Ultimate Frisbee SAGE 2008 team. Woohoo!
- And to Nels Nelson, who took the first look.